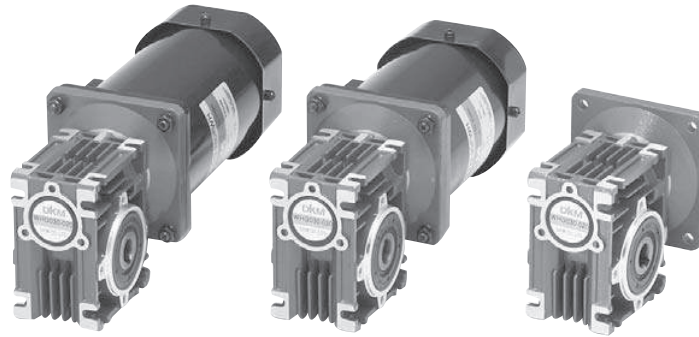


■ Permissible Torque of Worm Hollow Type



60Hz

Model	speed RPM (r/min)	240	180	120	90	72	60	45	36	30	22
Motor / Gearhead	Gear Ratio	7.5	10	15	20	25	30	40	50	60	80
9*DG* - 60FWH / 9WHD □	kgf cm	15	20	29	39	49	54	72	90	107	120
	N.m	1.5	2.0	2.9	3.9	4.9	5.4	7.2	9.0	10.7	12.0
	lb-in	13.2	17.6	25.5	34.3	43	48	63	79	94	106
9*DG* - 90FWH / 9WHD □	kgf cm	22	29	44	59	73	80	107	133	160	180
	N.m	2.2	2.6	4.4	5.9	7.3	8.0	10.7	13.3	16.0	18.0
	lb-in	19.4	25.5	38.7	51.9	64.2	70	94	117	141	158
9*DG* - 120FWH / 9WHD □	kgf cm	29	39	59	78	97	107	143	179	214	240
	N.m	2.9	3.9	5.9	7.8	9.7	10.7	14.3	17.9	21.4	24.0
	lb-in	41	41	62	74	103	123	148	205	246	211
9*DG* - 150FWH / 9WHD □	kgf cm	37	49	73	97	121	133	178	223	267	300
	N.m	3.7	4.9	7.3	9.7	12.1	13.3	17.8	22.3	26.7	30.0
	lb-in	33	43	64	85	106	117	157	196	235	264
9*DG* - 180FWH / 9WHD □	kgf cm	44	58	88	117	146	161	214	268	321	360
	N.m	4.4	5.8	8.8	11.7	14.6	16.1	21.4	26.8	32.1	36.0
	lb-in	39	51	77	103	128	142	188	236	282	317
9*DG* - 200FWH / 9WHD □	kgf cm	49	65	98	129	162	178	238	297	357	380
	N.m	4.9	6.5	9.8	12.9	16.2	17.8	23.8	29.7	35.7	38.0
	lb-in	43	57	86	114	143	157	209	261	314	334

50Hz

Model	speed RPM (r/min)	200	150	100	75	60	50	38	30	25	18
Motor / Gearhead	Gear Ratio	7.5	10	15	20	25	30	40	50	60	80
9*DG* - 60FWH / 9WHD □	kgf cm	18	23	35	47	58	64	85	107	128	144
	N.m	1.8	2.3	3.5	4.7	5.8	6.4	8.5	10.7	12.8	14.4
	lb-in	15.8	20.2	30.8	41.4	51	56	75	94	113	126.7
9*DG* - 90FWH / 9WHD □	kgf cm	26	35	52	70	88	96	128	160	192	216
	N.m	2.6	3.5	5.2	7.0	8.8	9.6	12.8	16.0	19.2	21.6
	lb-in	22.9	30.8	45.8	61.6	77.4	84	113	141	169	190
9*DG* - 120FWH / 9WHD □	kgf cm	35	47	70	93	117	128	171	214	257	288
	N.m	3.5	4.7	7.0	9.3	11.7	12.8	17.1	21.4	25.7	28.8
	lb-in	41	41	62	74	103	123	148	205	246	253
9*DG* - 150FWH / 9WHD □	kgf cm	44	58	88	117	146	160	214	267	321	360
	N.m	4.4	5.8	8.8	11.7	14.6	16.0	21.4	26.7	32.1	36.0
	lb-in	39	51	77	103	128	141	188	235	282	317
9*DG* - 180FWH / 9WHD □	kgf cm	53	70	105	140	175	193	257	321	385	432
	N.m	5.3	7.0	10.5	14.0	17.5	19.3	25.7	32.1	38.5	43.2
	lb-in	47	62	92	123	154	170	226	282	339	380
9*DG* - 200FWH / 9WHD □	kgf cm	58	78	117	156	195	214	286	357	428	456
	N.m	5.8	7.8	11.7	15.6	19.5	21.4	28.6	35.7	42.8	45.6
	lb-in	51	69	103	137	172	188	252	314	377	401

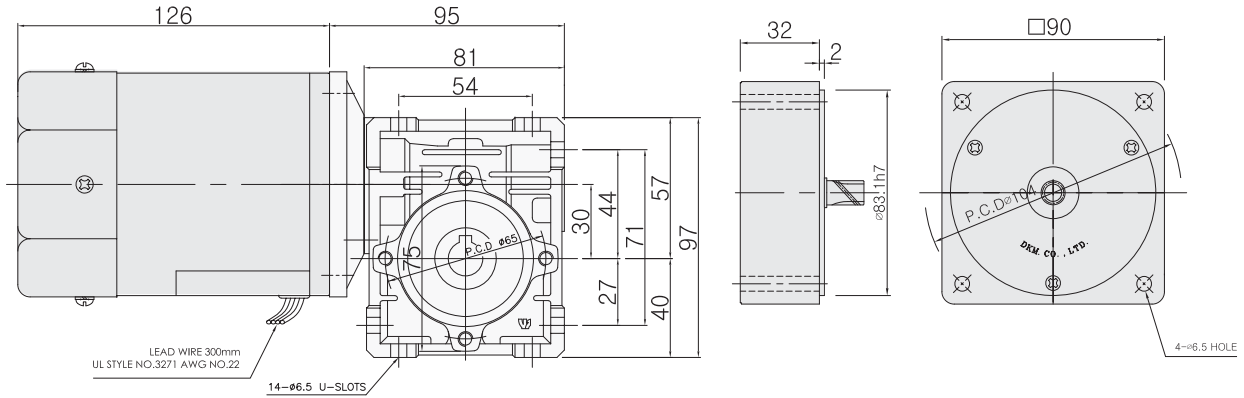
* Enter the gear ratio in the box(□) within the model name.

Dimension

1. 60W

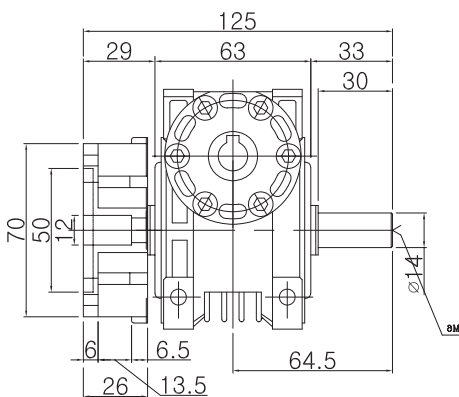
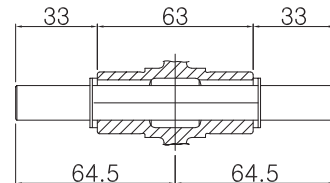
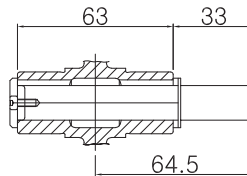
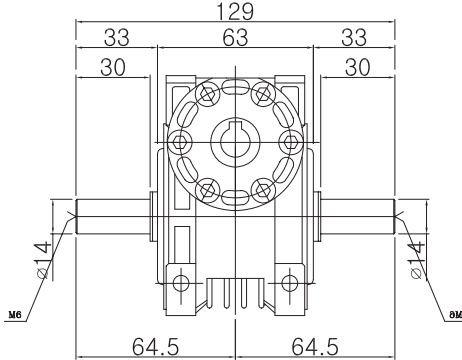
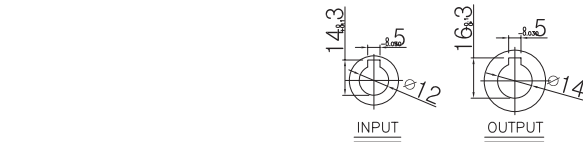
- ◆ Induction Motor With Worm Hollow Gearhead
- * MODEL : 9IDG□-60FWH

- ◆ INTER-DECIMAL GEARHEAD
- * MODEL : 9XD10MWH

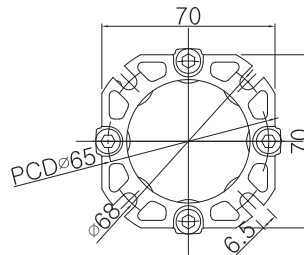


◆ WEIGHT

PART	WEIGHT(Kg)
MOTOR	2.6
DECIMAL GEARHEAD	0.5
GEARHEAD	1.130

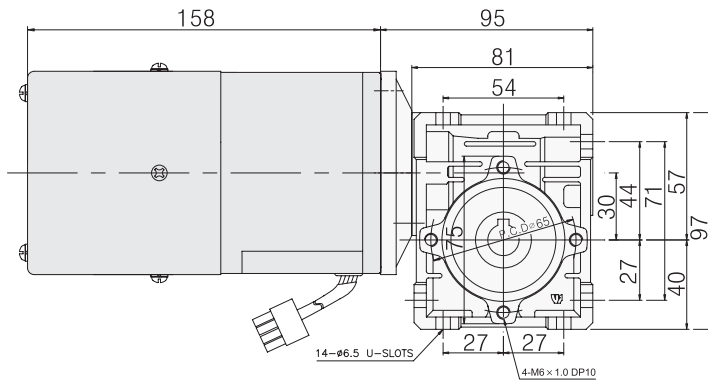


◆ FLANGE



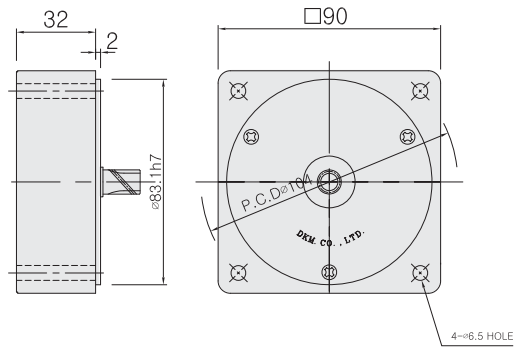
◆ Speed Control Motor With Worm Hollow Gearhead

* MODEL : 9SDG□-60F2WH



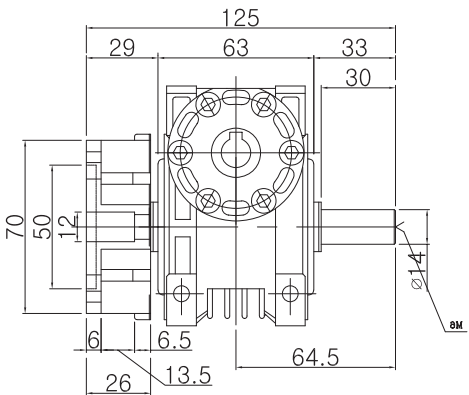
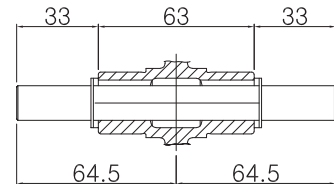
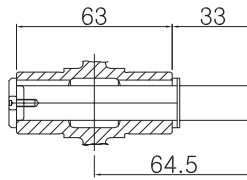
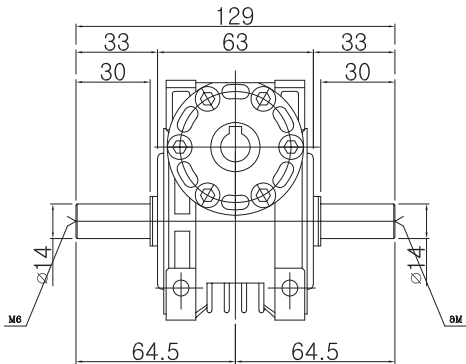
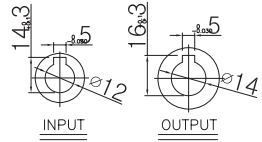
◆ INTER-DECIMAL GEARHEAD

* MODEL : 9XD10MWH

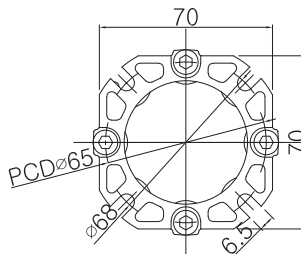


◆ WEIGHT

PART	WEIGHT(Kg)
MOTOR	2.7
DECIMAL GEARHEAD	0.5
GEARHEAD	1.130



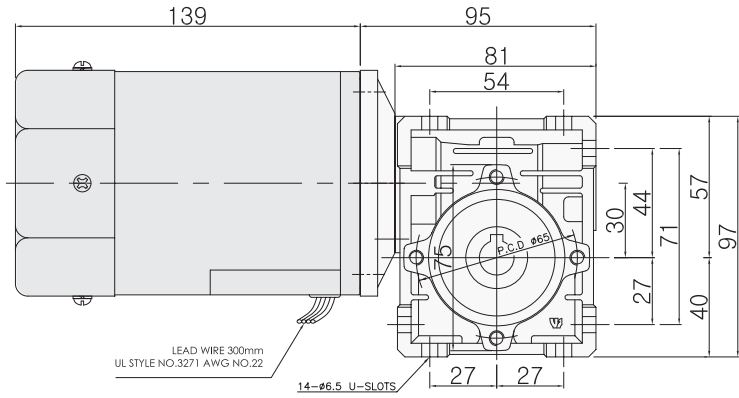
◆ FLANGE



2. 90W

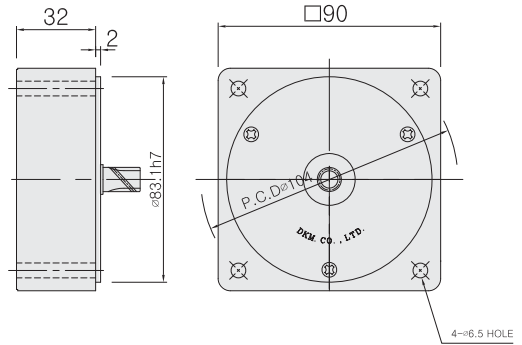
◆ Induction Motor With Worm Hollow Gearhead

* MODEL : 9IDG□-90FWH



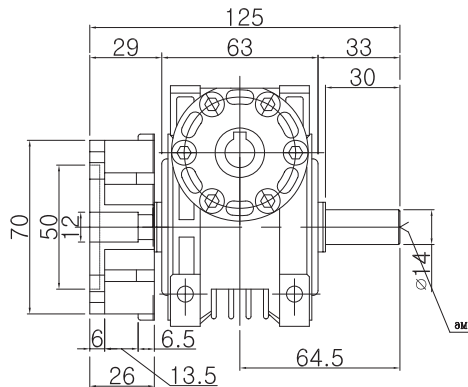
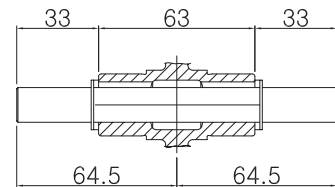
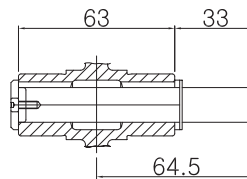
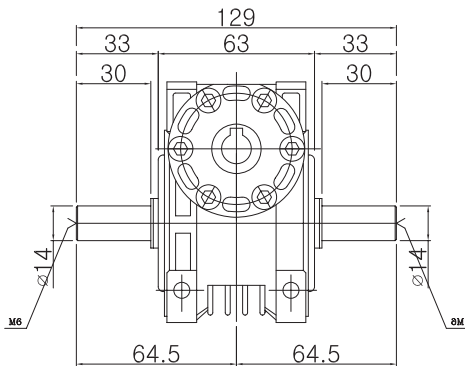
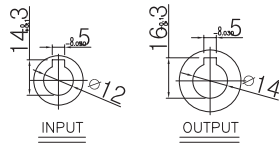
◆ INTER-DECIMAL GEARHEAD

* MODEL : 9XD10MWH

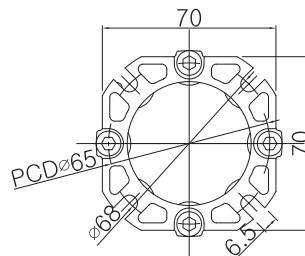


◆ WEIGHT

PART	WEIGHT(Kg)
MOTOR	3.0
DECIMAL GEARHEAD	0.5
GEARHEAD	1.130

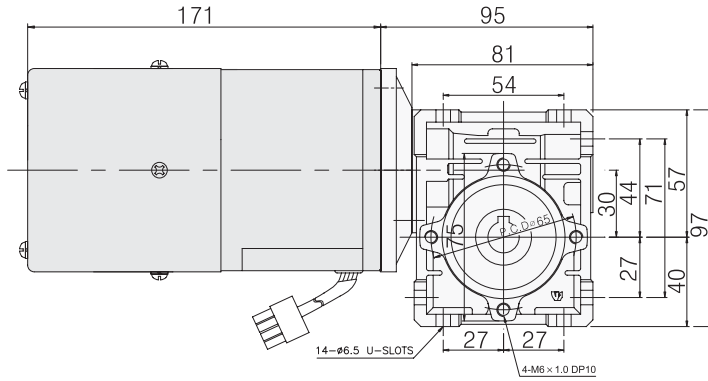


◆ FLANGE



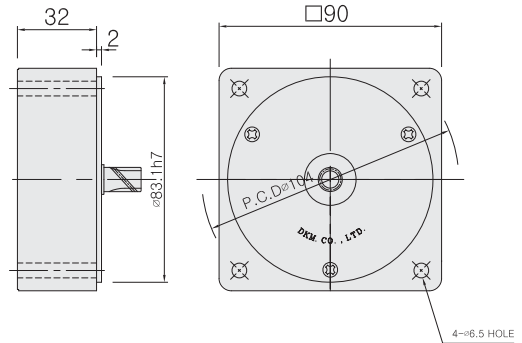
◆ Speed Control Motor With Worm Hollow Gearhead

* MODEL : 9SDG□-90F2WH



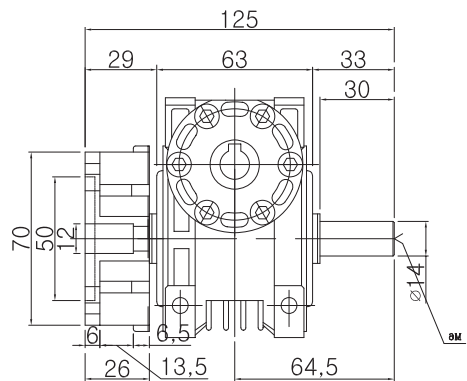
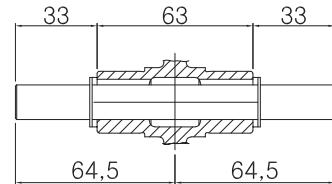
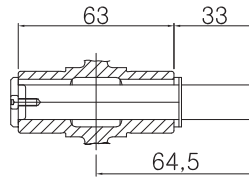
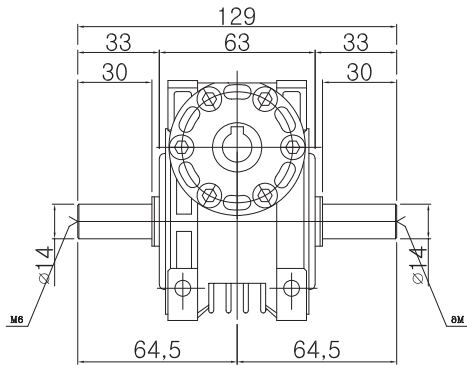
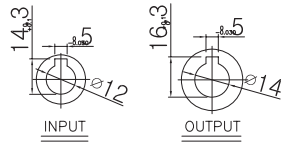
◆ INTER-DECIMAL GEARHEAD

* MODEL : 9XD10MWH

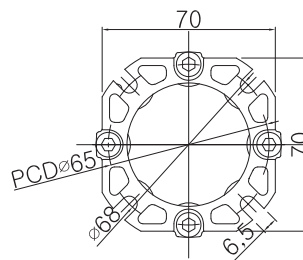


◆ WEIGHT

PART	WEIGHT(Kg)
MOTOR	3.0
DECIMAL GEARHEAD	0.5
GEARHEAD	1.130



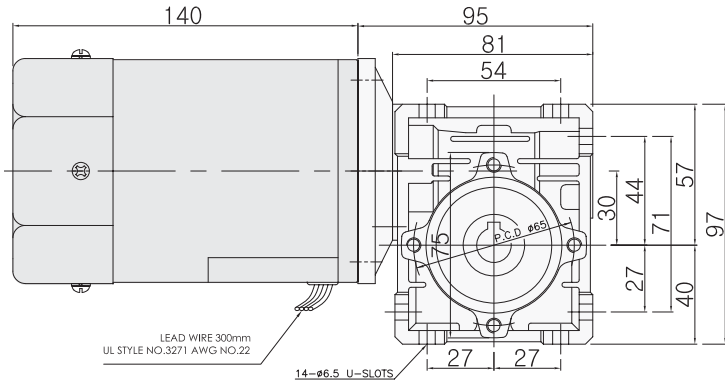
◆ FLANGE



3. 120W

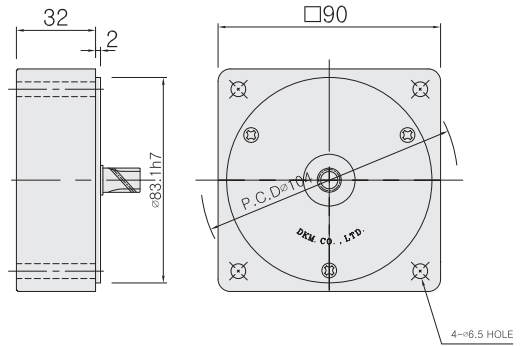
◆ Induction Motor With Worm Hollow Gearhead

* MODEL : 9IDG□-120FWH



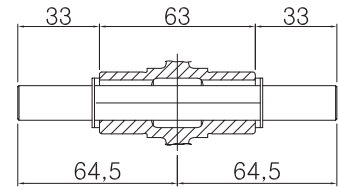
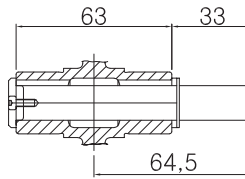
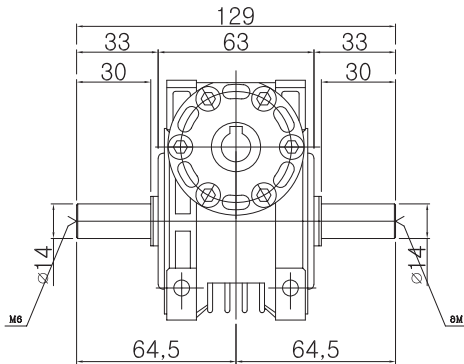
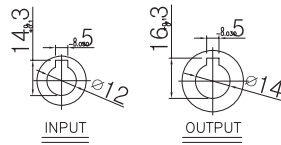
◆ INTER-DECIMAL GEARHEAD

* MODEL : 9XD10MWH

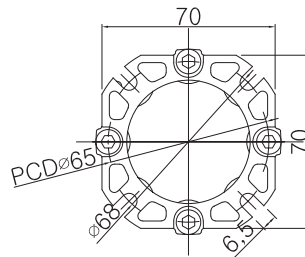
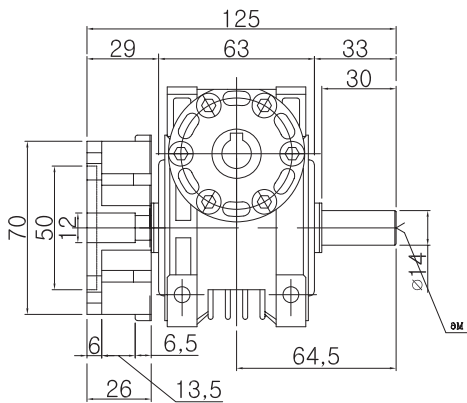


◆ WEIGHT

PART	WEIGHT(Kg)
MOTOR	3.0
DECIMAL GEARHEAD	0.5
GEARHEAD	1.130

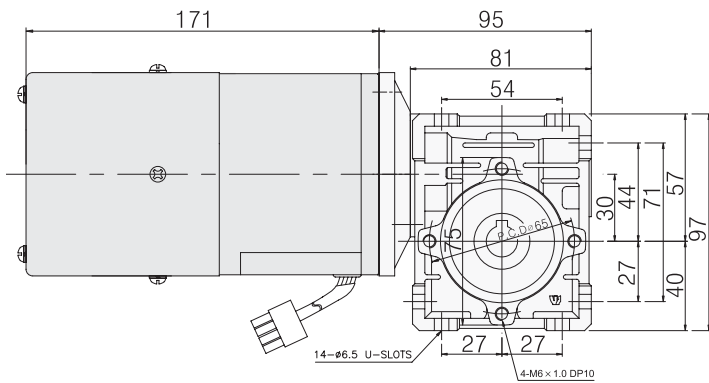


◆ FLANGE



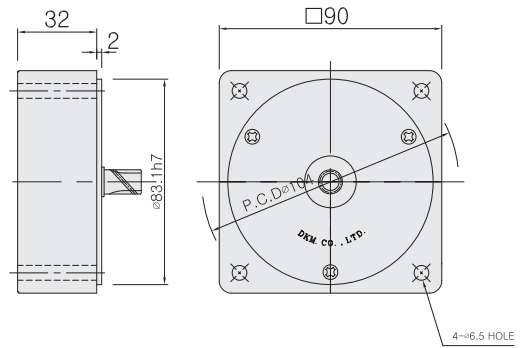
◆ Speed Control Motor With Worm Hollow Gearhead

* MODEL : 9SDG□-120F2WH



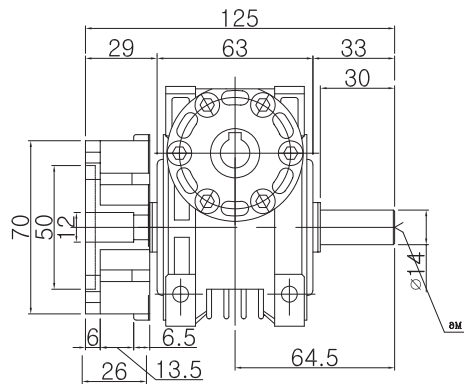
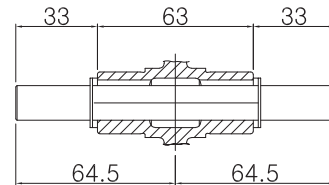
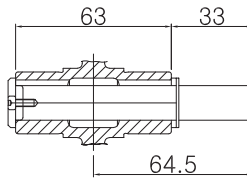
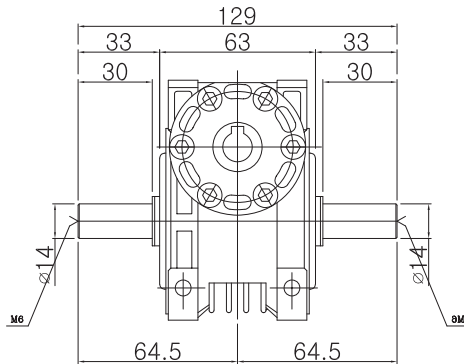
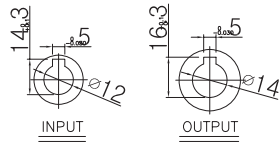
◆ INTER-DECIMAL GEARHEAD

* MODEL : 9XD10MWH

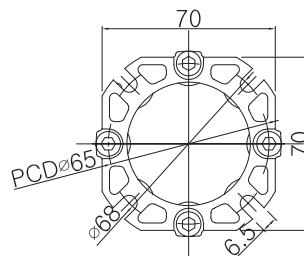


◆ WEIGHT

PART	WEIGHT(Kg)
MOTOR	2.7
DECIMAL GEARHEAD	0.5
GEARHEAD	1.130



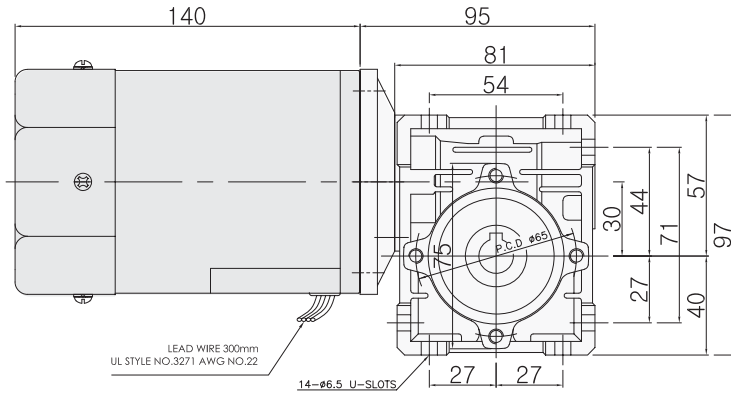
◆ FLANGE



4. 150W

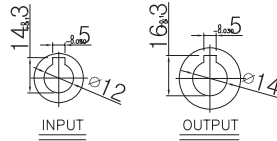
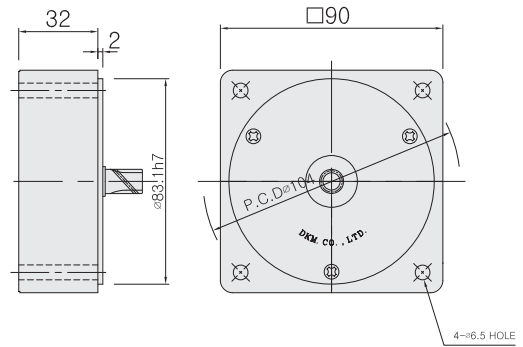
◆ Induction Motor With Worm Hollow Gearhead

* MODEL : 9IDG□-150FWH



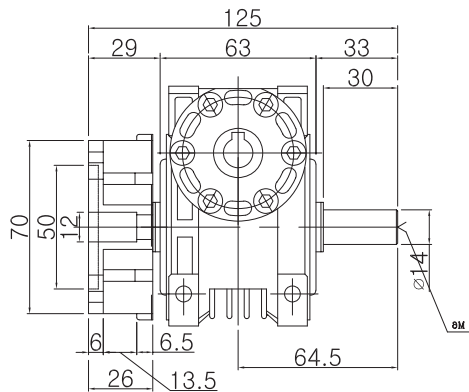
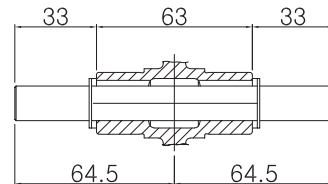
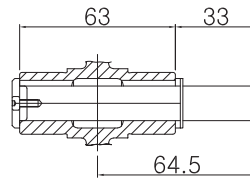
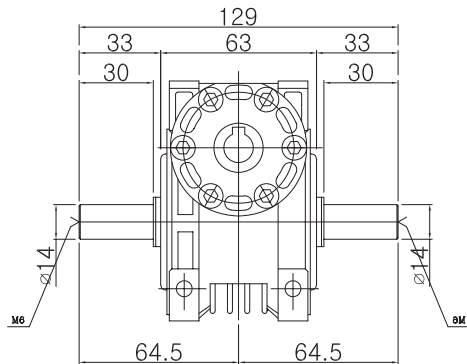
◆ INTER-DECIMAL GEARHEAD

* MODEL : 9XD10MWH

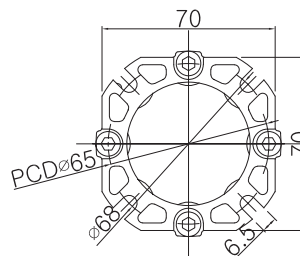


◆ WEIGHT

PART	WEIGHT(Kg)
MOTOR	3.0
DECIMAL GEARHEAD	0.5
GEARHEAD	1.130



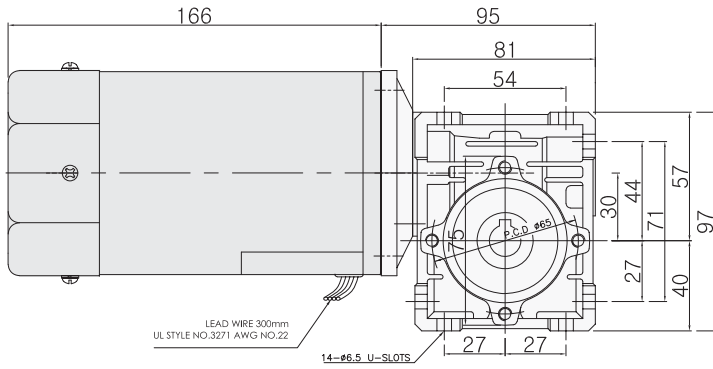
◆ FLANGE



5. 180W

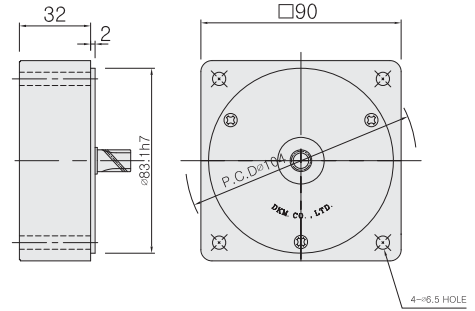
◆ Induction Motor With Worm Hollow Gearhead

* MODEL : 9IDG□-180FWH



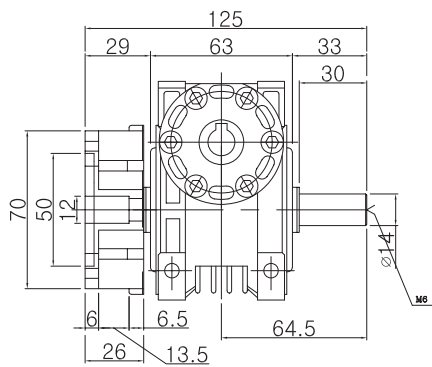
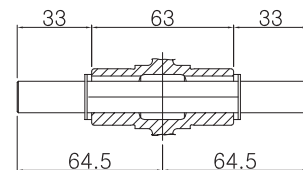
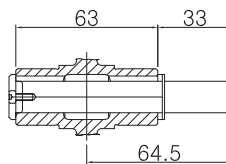
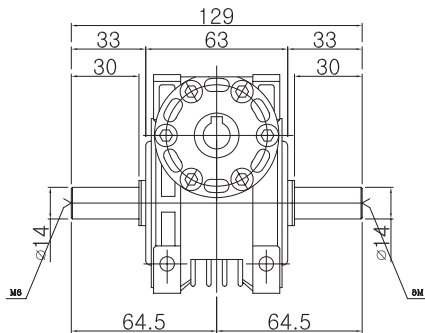
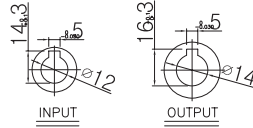
◆ INTER-DECIMAL GEARHEAD

* MODEL : 9XD10MWH

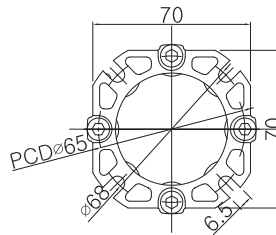


◆ WEIGHT

PART	WEIGHT(Kg)
MOTOR	3.8
DECIMAL GEARHEAD	0.5
GEARHEAD	1.130

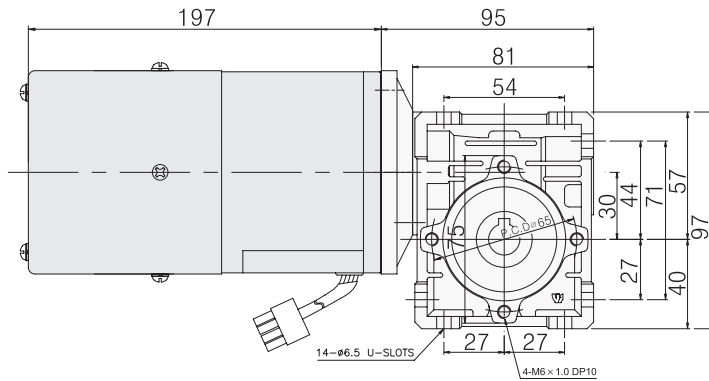


◆ FLANGE



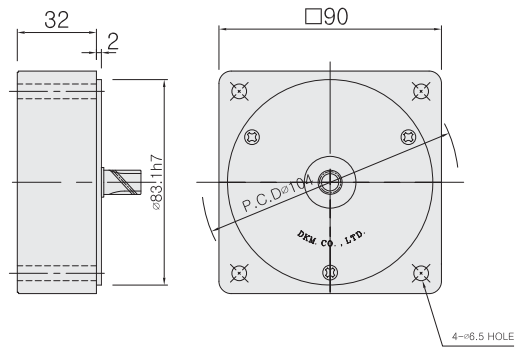
◆ Speed Control Motor With Worm Hollow Gearhead

* MODEL : 9SDG□-180F2WH



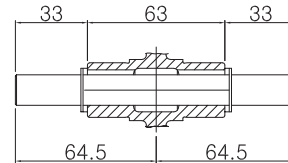
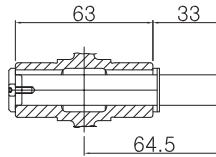
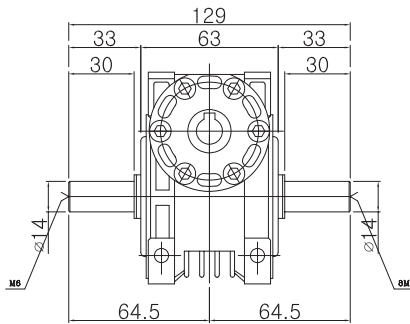
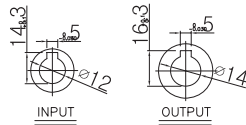
◆ INTER-DECIMAL GEARHEAD

* MODEL : 9XD10MWH

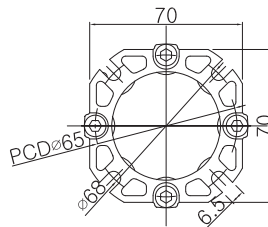
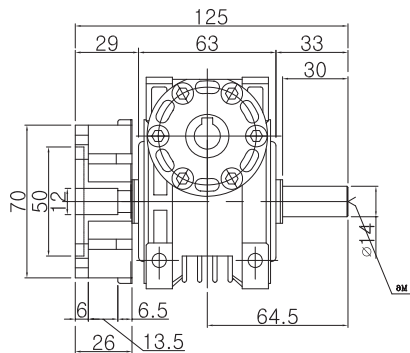


◆ WEIGHT

PART	WEIGHT(Kg)
MOTOR	3.9
DECIMAL GEARHEAD	0.5
GEARHEAD	1.130



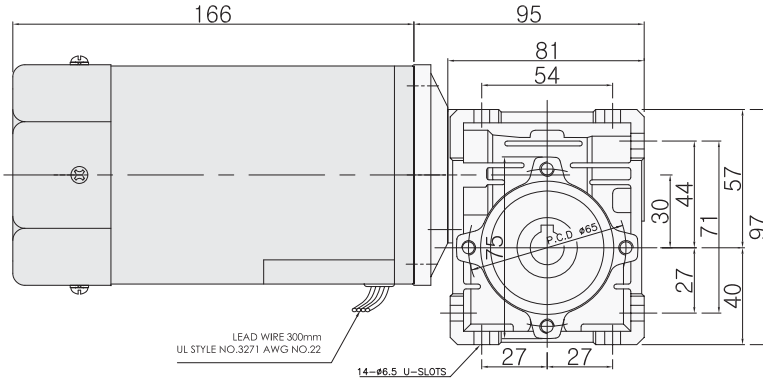
◆ FLANGE



6. 200W

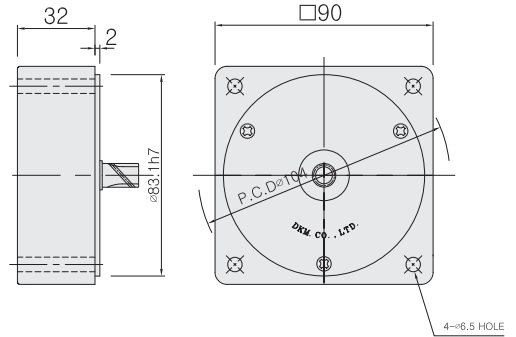
◆ Induction Motor With Worm Hollow Gearhead

* MODEL : 9IDG□-200FWH



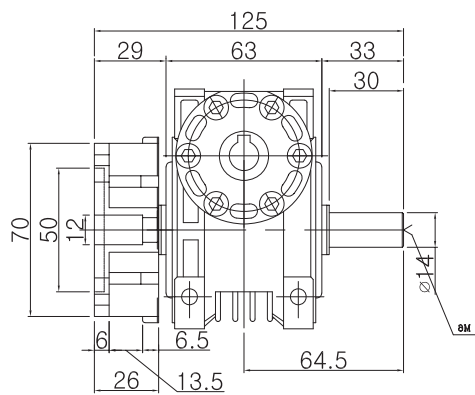
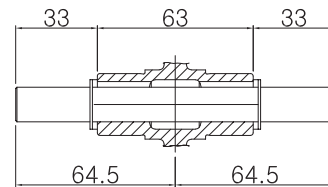
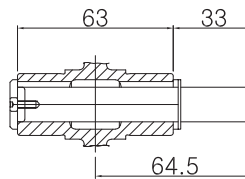
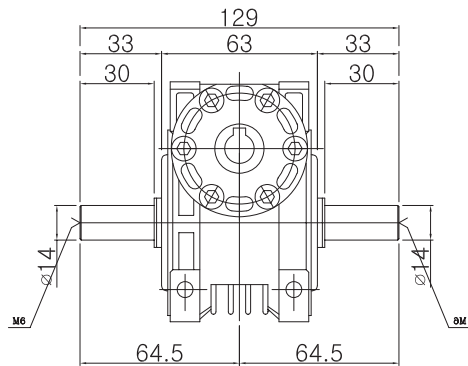
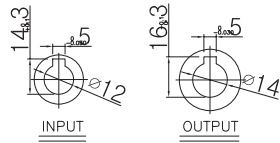
◆ INTER-DECIMAL GEARHEAD

* MODEL : 9XD10MWH



◆ WEIGHT

PART	WEIGHT(Kg)
MOTOR	3.8
DECIMAL GEARHEAD	0.5
GEARHEAD	1.130



◆ FLANGE

